

Important Information

We recommend that luminaires are installed by a qualified electrician ensuring the installation complies with current IEE wiring regulations BS7671:2018 & local building control.

- All tests should be carried out in accordance to EN 50172:2004.
- BELL will not accept responsibility for any claims arising from a poor installation.
- The light source of this luminaire is not replaceable: when the light source reaches end of life, the whole luminaire must be replaced.

Important User Advice

- The ambient room temperature should not exceed 30°C.
- Ensure that there is adequate free air ventilation around the fitting.
- It may be necessary to uprate your MCBs to allow for increased inrush current.
- Always switch off mains supply before installing.
- Operating Temperature 0°C to +35°C.
- Do not cover with any insulation.
- Internal use only

NOT Insulation Coverable

Not suitable for covering with insulation material



This product may contain substances that can be hazardous to the environment if not disposed of properly. Electrical and electronic equipment should never be disposed of with general household waste



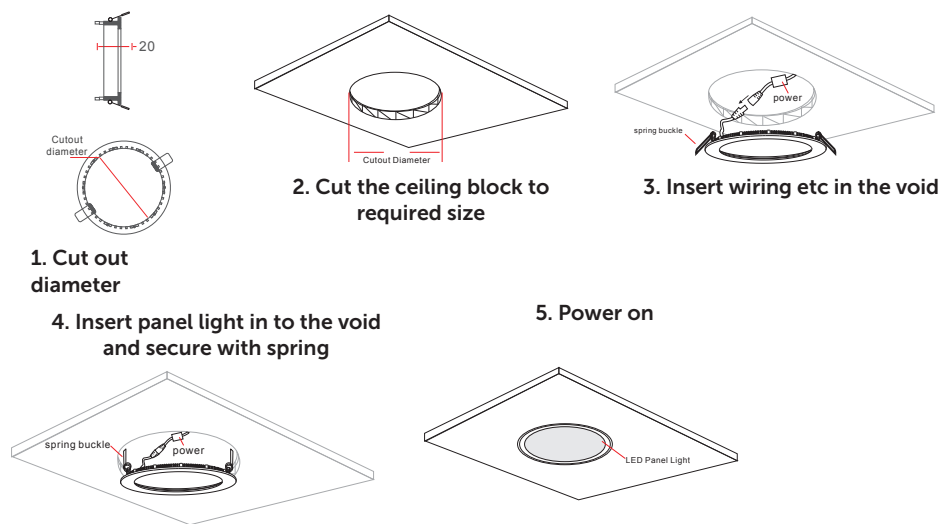
but must be separated for its correct treatment and recovery. Where possible recycle your packaging.

Read these instructions before installation and retain for future reference

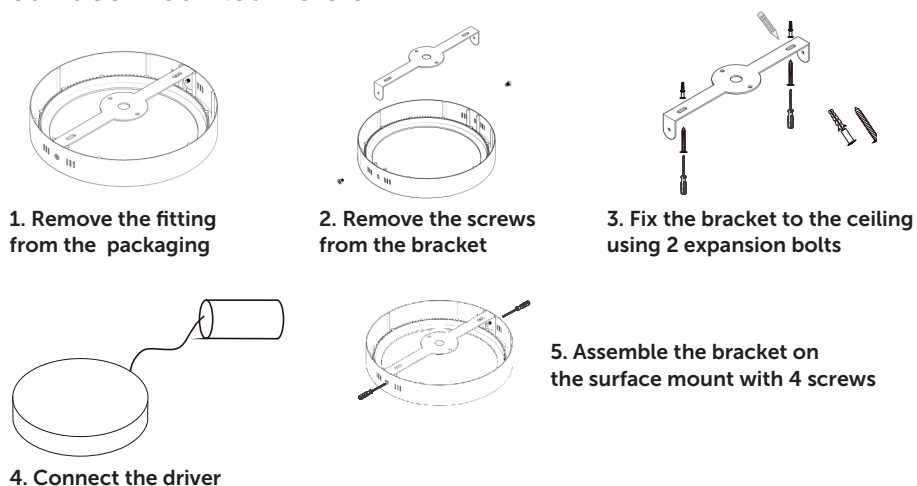
This equipment should be installed by a competent electrician



Flush Mounted Version

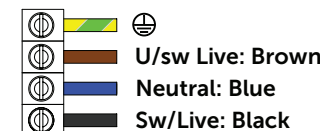


Surface Mounted Version



System Connection Diagrams

Wiring of the panel with non dimmable driver



Wiring of the panel with 1-10V dimmable driver

Wiring of the panel with DALI driver

Cut Out Dimensions

Code	Panel	Cut Out
09730	Ø145mm 9W	Ø130mm
09729	Ø170mm 12W	Ø160mm
09731	Ø190mm 15W	Ø180mm
09732	Ø225mm 18W	Ø210mm
09733	Ø300mm 24W	Ø282mm

Technical Helpline +44 (0)1924 893380

www.bellighting.co.uk

British Electric Lamps Ltd, Unit A Foxbridge Way
Normanton Ind Est, Normanton, West Yorkshire. WF6 1TN

T: +44 (0)1924 893380 F: +44 (0)1924 894320 E: sales@bellighting.co.uk



Date	Revision
1.6.2022	2

Testing & Commissioning for Emergency Luminaire

- Ensure the Load is connected.
- Connect the battery.
- Switch on the Unswitched Supply
- Check the Charge LED illuminates.
- Switch on the Maintained Supply
- Check the LED illuminates as normal.
- Switch off the Maintained Supply.
- Switch off the Unswitched Supply
- Check the Charge LED extinguishes and the load LED illuminates at a reduced output.
- Enter the commissioning date on the Battery Pack.
Switch on the Unswitched Supply

Luminaire Ref/Location		In Case of difficulty, contact the Installation Engineers:- Tel: _____									
Full Recharge Time 24 Hours			Duration 3 Hours			Lamp Type - LED					
ROUTINE TEST RECORD											
	Year 1		Year 2		Year 3		Year 4		Year 5		
Monthly Test	Signed	Date	Signed	Date	Signed	Date	Signed	Date	Signed	Date	
Functional											
Functional											
Functional											
Functional											
Functional											
Functional											
Functional											
Functional											
Functional											
Functional											
Three Hour											

Technical Helpline +44 (0)1924 893380

www.bellighting.co.uk

British Electric Lamps Ltd, Unit A Foxbridge Way
Normanton Ind Est, Normanton, West Yorkshire. WF6 1TN

T: +44 (0)1924 893380 F: +44 (0)1924 894320 E: sales@bellighting.co.uk